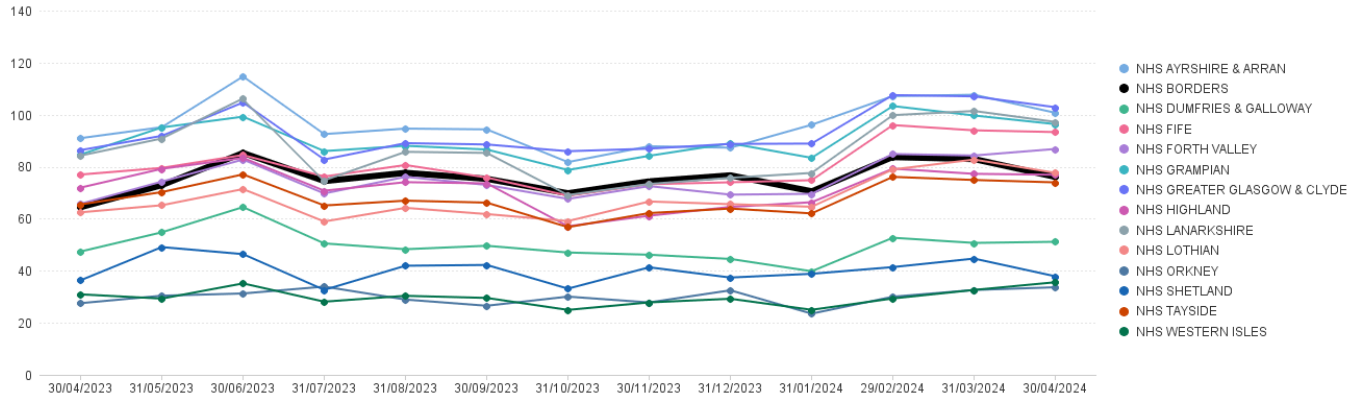


All UCF Claims - Items per '000 List Size by Board, up to April 2024

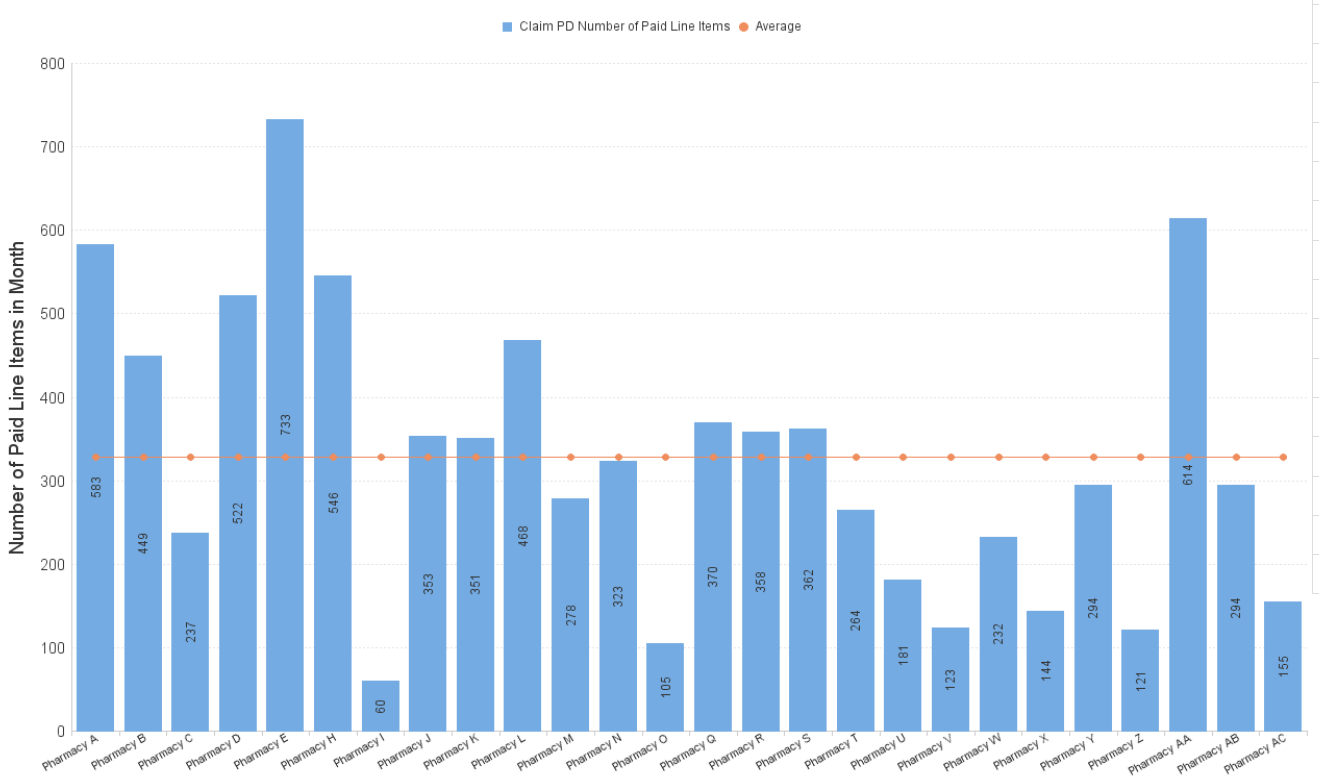
All items claimed on UCF forms, including all Pharmacy First sub-services, CPUS, EHC, GFF, HSV, MVP and NRT.

Items per '000 LS by Paid Date and Presc Health Board Name



	Apr 23	May 23	Jun 23	Jul 23	Aug 23	Sep 23	Oct 23	Nov 23	Dec 23	Jan 24	Feb 24	Mar 24	Apr 24
NHS AYRSHIRE & ARRAN	90.98	95.19	114.68	92.54	94.65	94.36	81.78	87.86	87.32	96.12	107.15	107.68	100.73
NHS BORDERS	64.43	72.90	85.30	74.48	77.64	75.35	69.79	74.36	76.68	70.56	83.72	82.95	76.09
NHS DUMFRIES & GALLOWAY	47.41	54.79	64.48	50.53	48.29	49.62	47.03	46.17	44.56	39.82	52.70	50.72	51.15
NHS FIFE	76.99	79.55	84.50	76.24	80.65	75.85	68.87	73.27	74.01	74.82	96.00	93.99	93.32
NHS FORTH VALLEY	65.74	74.30	82.76	69.72	76.11	73.00	67.64	72.54	69.28	69.59	84.90	84.31	86.82
NHS GRAMPIAN	84.69	95.10	99.24	86.01	88.05	86.62	78.73	84.20	89.00	83.42	103.31	99.69	96.37
NHS GREATER GLASGOW & CLYDE	86.38	91.87	104.69	82.78	89.06	88.56	85.96	86.95	88.77	88.89	107.54	107.05	102.87
NHS HIGHLAND	71.97	79.20	83.38	70.79	74.06	73.60	57.13	61.17	64.55	66.35	79.25	77.27	76.91
NHS LANARKSHIRE	84.29	90.85	106.23	74.78	85.73	85.30	69.13	73.37	75.74	77.60	99.82	101.42	97.22
NHS LOTHIAN	62.47	65.19	71.41	58.95	64.19	61.80	59.11	66.63	65.61	64.61	78.96	82.76	77.65
NHS ORKNEY	27.55	30.43	31.28	33.92	28.94	26.56	30.08	27.84	32.50	23.53	30.03	32.63	33.67
NHS SHETLAND	36.34	49.11	46.41	32.67	41.95	42.25	33.14	41.34	37.41	38.85	41.42	44.69	37.89
NHS TAYSIDE	65.52	70.25	77.06	65.11	66.95	66.20	56.79	62.20	63.91	62.06	76.11	74.90	73.98
NHS WESTERN ISLES	30.95	29.32	35.16	28.13	30.38	29.57	24.97	27.85	29.25	25.01	29.36	32.65	35.60

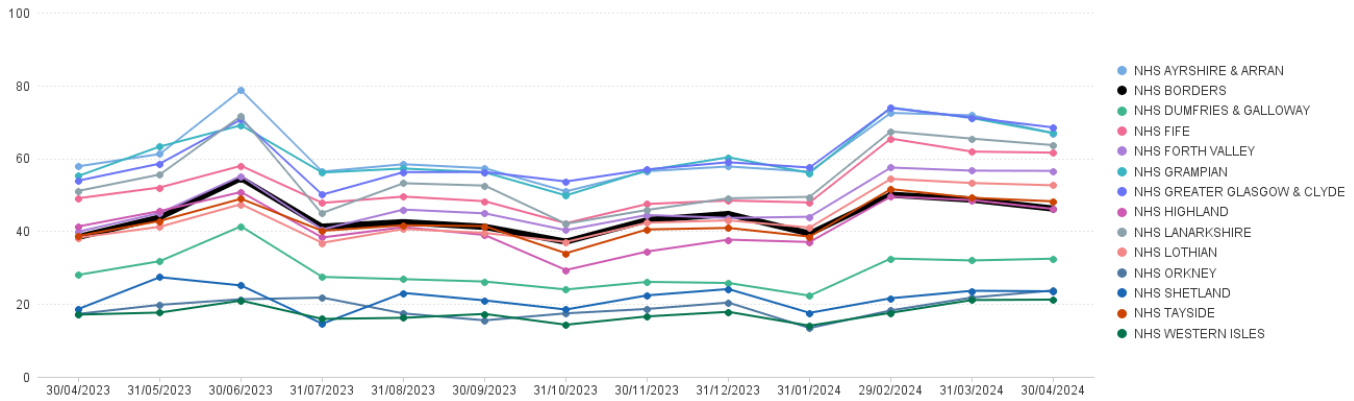
NHS Borders: Number of Paid Line Items in Month (Apr 2024)



Pharmacy First Items per '000 List Size by Board

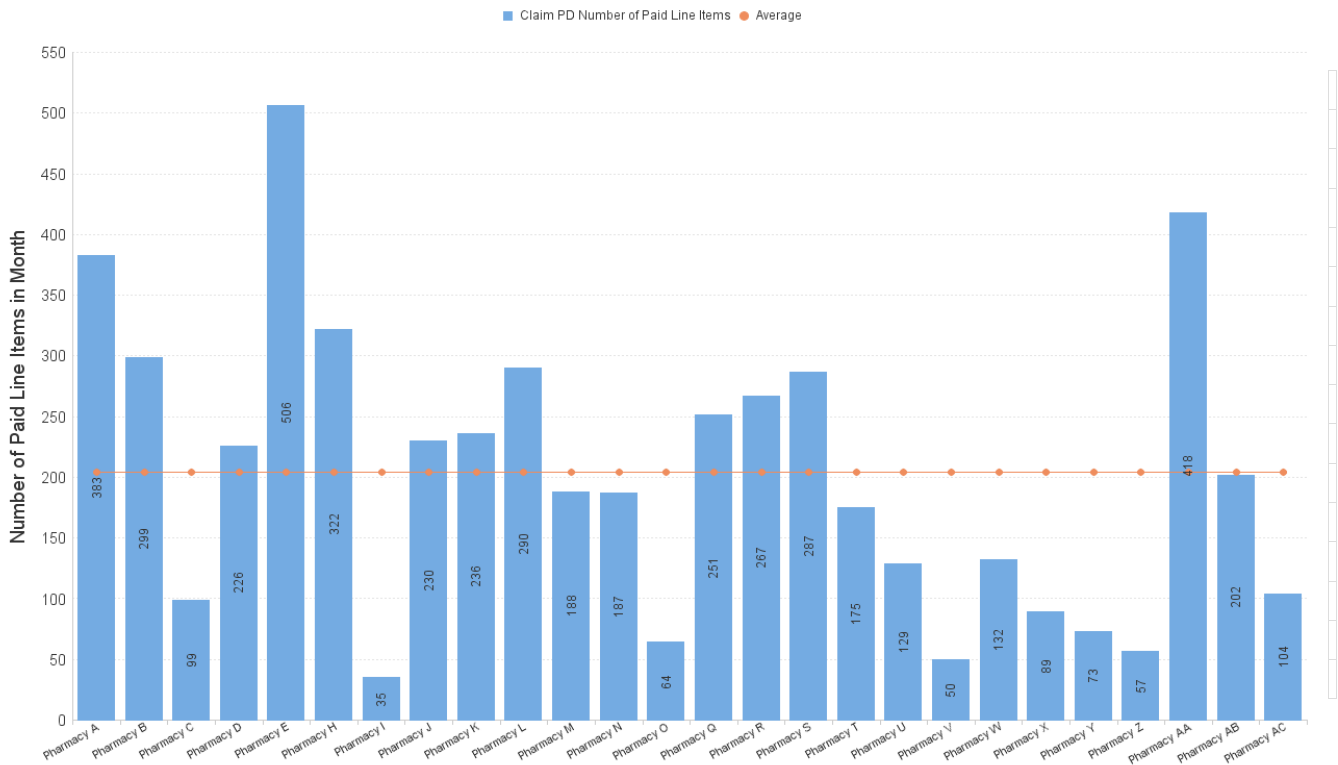
Pharmacy First includes sub-services flags M (Minor Ailments), UTI/G/R (UTI where an item has been dispensed), IPT/G/R (Impetigo where an item has been dispensed)

Items per '000 LS by Paid Date and Presc Health Board Name



	Apr 23	May 23	Jun 23	Jul 23	Aug 23	Sep 23	Oct 23	Nov 23	Dec 23	Jan 24	Feb 24	Mar 24	Apr 24
NHS AYRSHIRE & ARRAN	57.81	61.19	78.69	56.36	58.37	57.28	50.92	56.47	57.75	56.34	72.47	71.81	66.90
NHS BORDERS	38.43	43.77	54.49	41.23	42.47	41.19	37.11	43.05	44.70	39.34	50.02	48.65	46.20
NHS DUMFRIES & GALLOWAY	28.01	31.76	41.32	27.44	26.82	26.18	23.99	26.08	25.78	22.29	32.49	31.96	32.44
NHS FIFE	49.04	51.99	57.94	47.77	49.49	48.23	42.18	47.47	48.40	47.88	65.42	61.84	61.56
NHS FORTH VALLEY	39.88	44.99	55.12	40.50	45.93	44.89	40.27	44.44	43.62	43.96	57.46	56.61	56.55
NHS GRAMPIAN	55.17	63.23	69.07	56.10	57.20	56.16	49.81	56.71	60.28	55.97	73.94	71.04	66.93
NHS GREATER GLASGOW & CLYDE	53.89	58.54	70.65	50.03	56.21	56.25	53.64	56.96	58.93	57.46	73.81	71.17	68.47
NHS HIGHLAND	41.31	45.52	50.74	38.26	41.12	38.95	29.34	34.42	37.67	37.03	49.52	48.53	46.11
NHS LANARKSHIRE	51.07	55.55	71.61	45.00	53.16	52.52	42.04	45.82	49.03	49.42	67.38	65.40	63.62
NHS Lothian	38.24	41.20	47.42	36.81	40.61	39.52	37.04	42.32	42.96	40.98	54.36	53.22	52.59
NHS ORKNEY	17.30	19.78	21.30	21.76	17.41	15.53	17.44	18.65	20.40	13.40	18.24	21.79	23.71
NHS SHETLAND	18.65	27.37	25.10	14.59	23.04	20.99	18.49	22.37	24.11	17.57	21.58	23.63	23.50
NHS TAYSIDE	38.71	42.81	48.89	40.10	41.64	41.38	33.95	40.47	40.89	38.51	51.54	49.15	48.19
NHS WESTERN ISLES	17.10	17.65	20.94	15.91	16.21	17.28	14.31	16.60	17.85	14.05	17.60	21.10	21.21

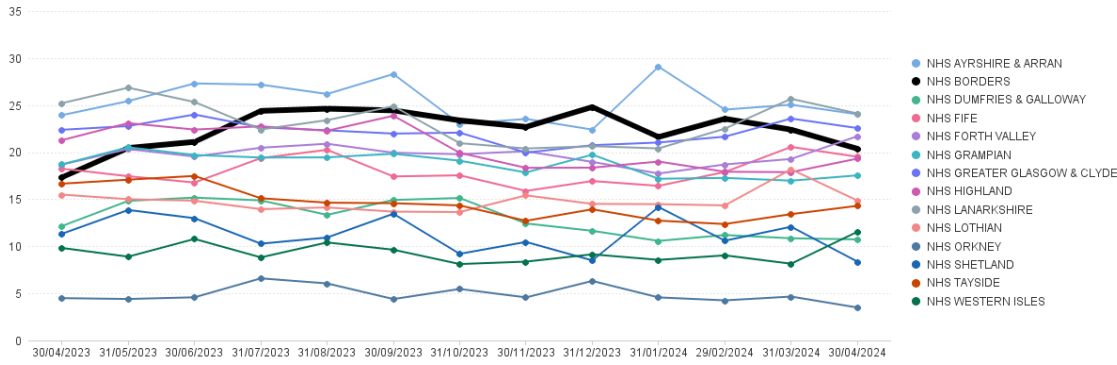
NHS Borders: Number of Paid Line Items in Month (Apr 2024)



Community Pharmacy Urgent Supply (CPUS) Items per '000 List Size by Board

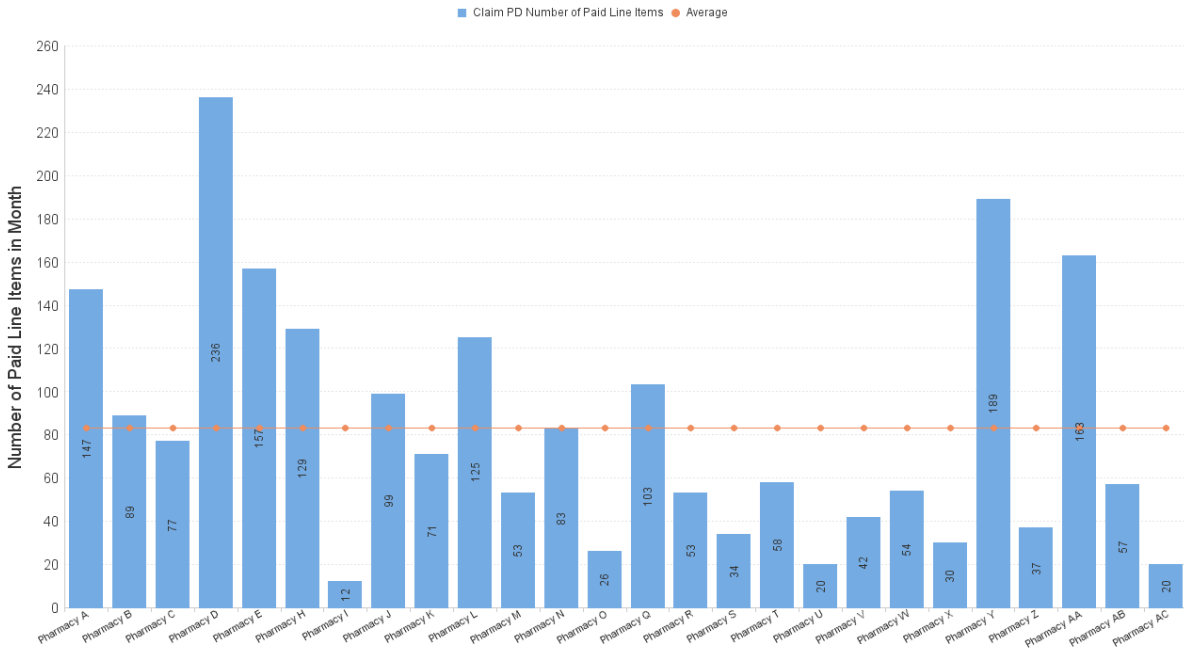
Items dispensed under sub-service flag CPUS

Items per '000 LS by Paid Date and Presc Health Board Name



	Apr 23	May 23	Jun 23	Jul 23	Aug 23	Sep 23	Oct 23	Nov 23	Dec 23	Jan 24	Feb 24	Mar 24	Apr 24
NHS AYRSHIRE & ARRAN	23.93	25.42	27.30	27.17	26.18	28.30	23.01	23.53	22.40	29.08	24.52	25.04	24.03
NHS BORDERS	17.33	20.44	21.09	24.38	24.62	24.43	23.37	22.68	24.80	21.61	23.55	22.39	20.36
NHS DUMFRIES & GALLOWAY	12.15	14.82	15.17	14.88	13.34	14.92	15.13	12.43	11.64	10.57	11.20	10.85	10.74
NHS FIFE	18.25	17.44	16.78	19.37	20.25	17.42	17.54	15.88	16.93	16.42	17.89	20.56	19.51
NHS FORTH VALLEY	18.68	20.33	19.53	20.47	20.89	19.94	19.78	20.10	18.97	17.73	18.70	19.28	21.69
NHS GRAMPIAN	18.71	20.52	19.70	19.43	19.45	19.83	19.09	17.84	19.73	17.18	17.27	16.97	17.54
NHS GREATER GLASGOW & CLYDE	22.38	22.78	24.00	22.63	22.32	21.97	22.07	19.95	20.74	21.03	21.65	23.57	22.56
NHS HIGHLAND	21.28	23.09	22.40	22.75	22.27	23.87	19.93	18.34	18.35	19.00	17.92	17.88	19.31
NHS LANARKSHIRE	25.20	26.85	25.33	22.41	23.40	24.89	20.96	20.39	20.64	20.40	22.50	25.67	24.11
NHS LOTHIAN	15.49	15.00	14.84	13.95	14.13	13.68	13.64	15.41	14.51	14.48	14.35	18.18	14.85
NHS ORKNEY	4.49	4.40	4.58	6.60	6.06	4.40	5.47	4.57	6.32	4.57	4.26	4.66	3.50
NHS SHETLAND	11.33	13.86	12.99	10.28	10.93	13.46	9.20	10.46	8.50	14.17	10.60	12.08	8.37
NHS TAYSIDE	16.65	17.08	17.48	15.10	14.64	14.58	14.35	12.71	13.93	12.73	12.37	13.42	14.30
NHS WESTERN ISLES	9.82	8.90	10.78	8.82	10.41	9.64	8.12	8.37	9.15	8.56	9.04	8.15	11.55

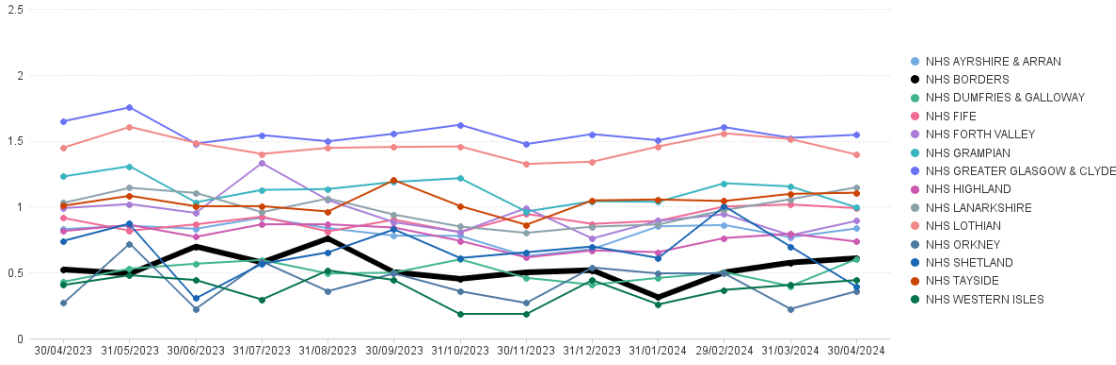
NHS Borders: Number of Paid Line Items in Month (Apr 2024)



Emergency Hormonal Contraception Items per '000 List Size by Board

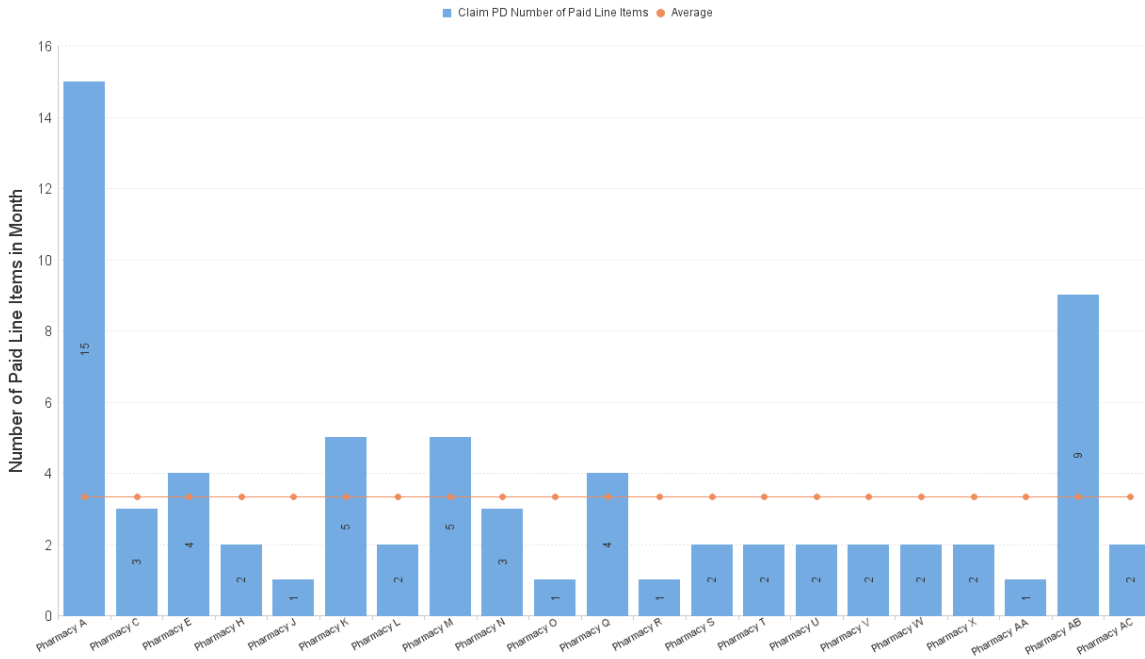
Items dispensed under sub-service flag EHC

Items per '000 LS by Paid Date and Presc Health Board Name



	Apr 23	May 23	Jun 23	Jul 23	Aug 23	Sep 23	Oct 23	Nov 23	Dec 23	Jan 24	Feb 24	Mar 24	Apr 24
NHS AYRSHIRE & ARRAN	0.83	0.86	0.83	0.92	0.84	0.78	0.78	0.62	0.68	0.85	0.86	0.77	0.83
NHS BORDERS	0.52	0.49	0.70	0.58	0.76	0.50	0.45	0.50	0.52	0.31	0.50	0.58	0.61
NHS DUMFRIES & GALLOWAY	0.43	0.53	0.57	0.60	0.49	0.50	0.60	0.46	0.41	0.46	0.50	0.40	0.60
NHS FIFE	0.91	0.82	0.87	0.92	0.81	0.90	0.81	0.95	0.87	0.89	1.00	1.02	0.99
NHS FORTH VALLEY	0.99	1.02	0.95	1.33	1.05	0.88	0.81	0.99	0.76	0.89	0.94	0.78	0.89
NHS GRAMPPIAN	1.23	1.31	1.03	1.13	1.13	1.19	1.22	0.96	1.04	1.04	1.18	1.15	0.99
NHS GREATER GLASGOW & CLYDE	1.65	1.75	1.48	1.54	1.50	1.55	1.62	1.47	1.55	1.50	1.60	1.52	1.55
NHS HIGHLAND	0.81	0.86	0.77	0.87	0.87	0.84	0.74	0.62	0.67	0.66	0.76	0.79	0.74
NHS LANARKSHIRE	1.03	1.14	1.10	0.96	1.06	0.94	0.85	0.80	0.85	0.86	0.97	1.06	1.15
NHS LOTHIAN	1.45	1.61	1.48	1.40	1.45	1.45	1.46	1.32	1.34	1.46	1.56	1.51	1.40
NHS ORKNEY	0.27	0.72	0.22	0.58	0.36	0.49	0.36	0.27	0.54	0.49	0.49	0.22	0.36
NHS SHETLAND	0.74	0.87	0.31	0.57	0.65	0.83	0.61	0.65	0.70	0.61	1.00	0.70	0.39
NHS TAYSIDE	1.01	1.08	1.00	1.00	0.96	1.20	1.00	0.86	1.05	1.05	1.04	1.10	1.11
NHS WESTERN ISLES	0.41	0.48	0.44	0.30	0.52	0.44	0.18	0.18	0.44	0.26	0.37	0.41	0.44

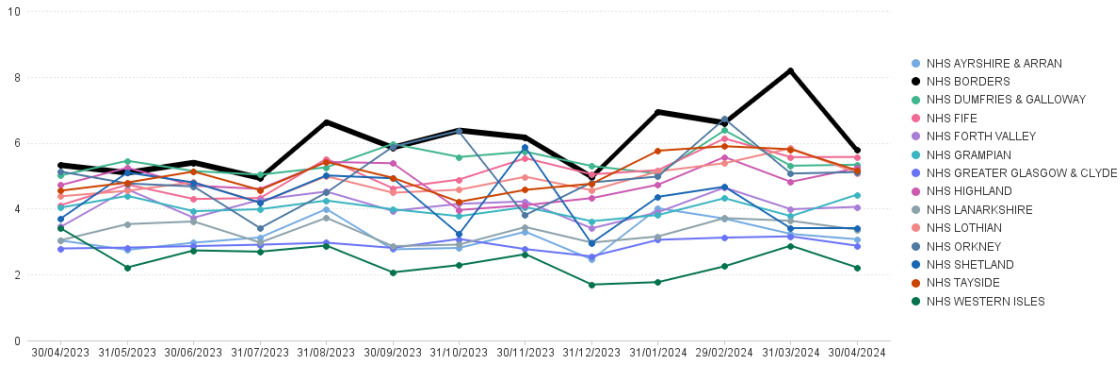
NHS Borders: Number of Paid Line Items in Month (Apr 2024)



Gluten Free Food Items per '000 List Size by Board

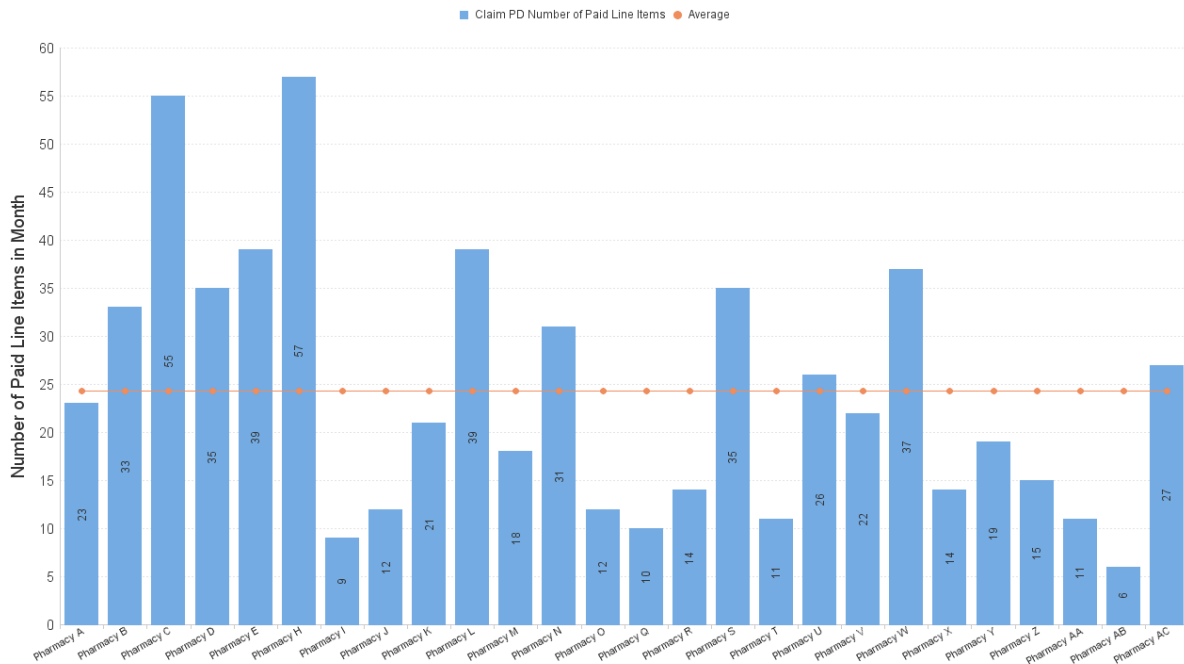
Items dispensed under sub-service flag GFF

Items per '000 LS by Paid Date and Presc Health Board Name



	Apr 23	May 23	Jun 23	Jul 23	Aug 23	Sep 23	Oct 23	Nov 23	Dec 23	Jan 24	Feb 24	Mar 24	Apr 24
NHS AYRSHIRE & ARRAN	3.03	2.75	2.97	3.13	3.99	2.77	2.81	3.30	2.46	4.01	3.70	3.23	3.07
NHS BORDERS	5.32	5.09	5.40	4.93	6.63	5.85	6.37	6.16	4.96	6.93	6.60	8.20	5.79
NHS DUMFRIES & GALLOWAY	5.01	5.45	5.14	5.03	5.26	5.97	5.57	5.73	5.29	5.07	6.38	5.30	5.33
NHS FIFE	4.11	4.73	4.29	4.32	5.51	4.62	4.88	5.53	5.04	5.17	6.13	5.56	5.57
NHS FORTH VALLEY	3.45	4.59	3.72	4.27	4.52	3.93	4.15	4.22	3.41	3.89	4.64	3.98	4.05
NHS GRAMPIAN	4.03	4.39	3.92	3.98	4.25	3.98	3.77	4.05	3.62	3.81	4.32	3.77	4.43
NHS GREATER GLASGOW & CLYDE	2.79	2.82	2.86	2.91	2.97	2.81	3.08	2.77	2.55	3.06	3.12	3.16	2.87
NHS HIGHLAND	4.72	5.24	4.70	4.60	5.42	5.38	3.96	4.11	4.32	4.73	5.57	4.81	5.23
NHS LANARKSHIRE	3.04	3.53	3.61	2.97	3.72	2.86	2.91	3.44	2.97	3.16	3.71	3.63	3.36
NHS Lothian	4.38	4.54	4.80	4.18	4.98	4.48	4.57	4.97	4.56	5.13	5.38	5.83	5.08
NHS ORKNEY	5.12	4.76	4.67	3.41	4.49	5.88	6.37	3.81	4.80	4.98	6.72	5.07	5.11
NHS SHETLAND	3.70	5.10	4.79	4.18	5.01	4.92	3.23	5.89	2.97	4.36	4.67	3.40	3.40
NHS TAYSIDE	4.55	4.79	5.13	4.57	5.42	4.94	4.21	4.57	4.76	5.76	5.89	5.80	5.16
NHS WESTERN ISLES	3.40	2.22	2.73	2.70	2.88	2.07	2.29	2.62	1.70	1.77	2.25	2.88	2.21

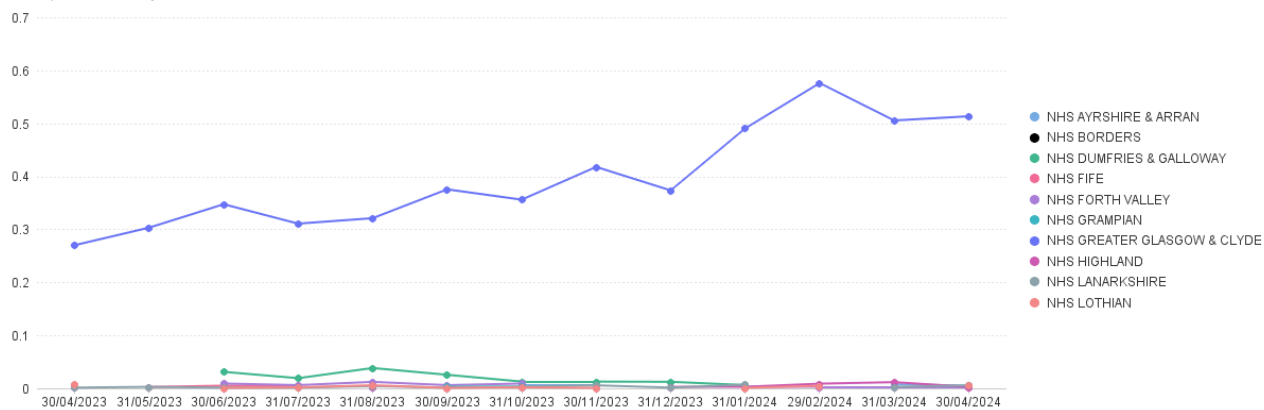
NHS Borders: Number of Paid Line Items in Month (Apr 2024)



Healthy Start Vitamins Items per '000 List Size by Board

Items dispensed under sub-service flag HSV

Items per '000 LS by Paid Date and Presc Health Board Name



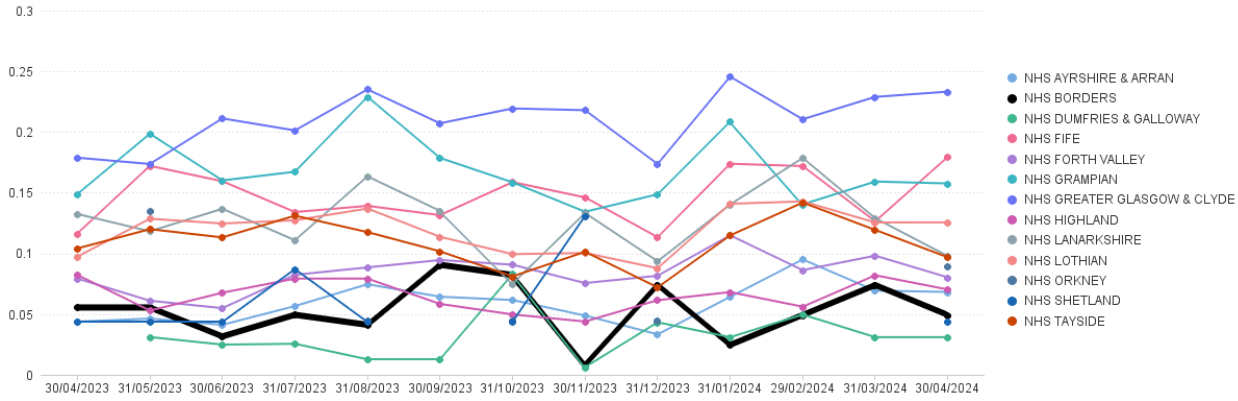
	Apr 23	May 23	Jun 23	Jul 23	Aug 23	Sep 23	Oct 23	Nov 23	Dec 23	Jan 24	Feb 24	Mar 24	Apr 24
NHS AYRSHIRE & ARRAN					0.00		0.01	0.01		0.00		0.01	0.01
NHS BORDERS							0.01						
NHS DUMFRIES & GALLOWAY			0.03	0.02	0.04	0.03	0.01	0.01	0.01	0.01			0.01
NHS FIFE		0.00	0.01	0.01		0.00			0.00		0.00		0.00
NHS FORTH VALLEY	0.00		0.01	0.01	0.01	0.01	0.01			0.00	0.00	0.00	0.00
NHS GRAMPIAN						0.00	0.00						0.00
NHS GREATER GLASGOW & CLYDE	0.27	0.30	0.35	0.31	0.32	0.38	0.36	0.42	0.37	0.49	0.58	0.51	0.51
NHS HIGHLAND	0.00				0.00		0.00		0.00	0.00	0.01	0.01	0.00
NHS LANARKSHIRE	0.00	0.00	0.00	0.00	0.00	0.00	0.00	0.01	0.00	0.01			0.00
NHS LOTHIAN	0.01		0.00	0.00	0.01	0.00	0.00	0.00		0.00	0.00		0.01

No Community Pharmacy graph included as number so low.

MenB Paracetamol Items per '000 List Size by Board

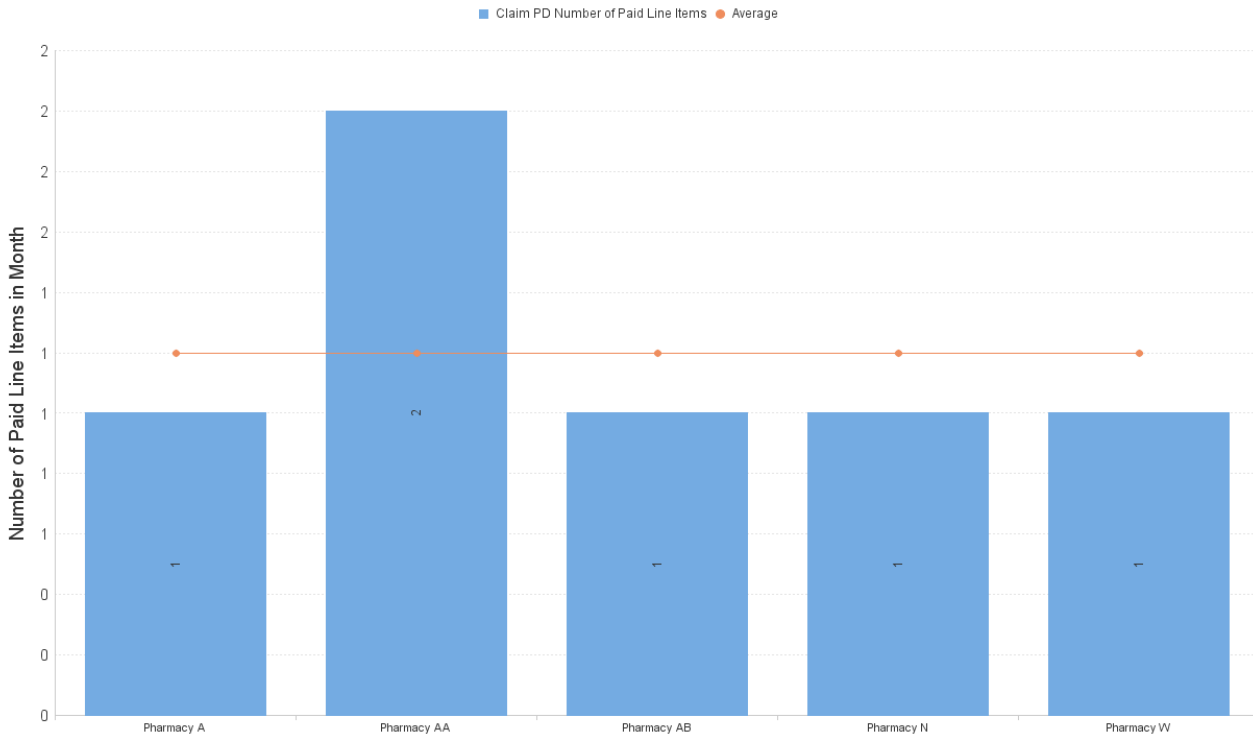
Items dispensed under sub-service flag MVP

Items per '000 LS by Paid Date and Presc Health Board Name



	Apr 23	May 23	Jun 23	Jul 23	Aug 23	Sep 23	Oct 23	Nov 23	Dec 23	Jan 24	Feb 24	Mar 24	Apr 24
NHS AYRSHIRE & ARRAN	0.04	0.05	0.04	0.06	0.07	0.06	0.06	0.05	0.03	0.06	0.10	0.07	0.07
NHS BORDERS	0.06	0.06	0.03	0.05	0.04	0.09	0.08	0.01	0.07	0.02	0.05	0.07	0.05
NHS DUMFRIES & GALLOWAY		0.03	0.02	0.03	0.01	0.01	0.08	0.01	0.04	0.03	0.05	0.03	0.03
NHS FIFE	0.12	0.17	0.16	0.13	0.14	0.13	0.16	0.15	0.11	0.17	0.17	0.13	0.18
NHS FORTH VALLEY	0.08	0.06	0.05	0.08	0.09	0.09	0.09	0.08	0.08	0.11	0.09	0.10	0.08
NHS GRAMPIAN	0.15	0.20	0.16	0.17	0.23	0.18	0.16	0.13	0.15	0.21	0.14	0.16	0.16
NHS GREATER GLASGOW & CLYDE	0.18	0.17	0.21	0.20	0.24	0.21	0.22	0.22	0.17	0.25	0.21	0.23	0.23
NHS HIGHLAND	0.08	0.05	0.07	0.08	0.08	0.06	0.05	0.04	0.06	0.07	0.06	0.08	0.07
NHS LANARKSHIRE	0.13	0.12	0.14	0.11	0.16	0.14	0.08	0.13	0.09	0.14	0.18	0.13	0.10
NHS Lothian	0.10	0.13	0.12	0.13	0.14	0.11	0.10	0.10	0.09	0.14	0.14	0.13	0.13
NHS ORKNEY		0.13			0.04		0.04		0.04				0.09
NHS SHETLAND	0.04	0.04	0.04	0.09	0.04			0.04	0.13				0.04
NHS TAYSIDE	0.10	0.12	0.11	0.13	0.12	0.10	0.08	0.10	0.07	0.11	0.14	0.12	0.10

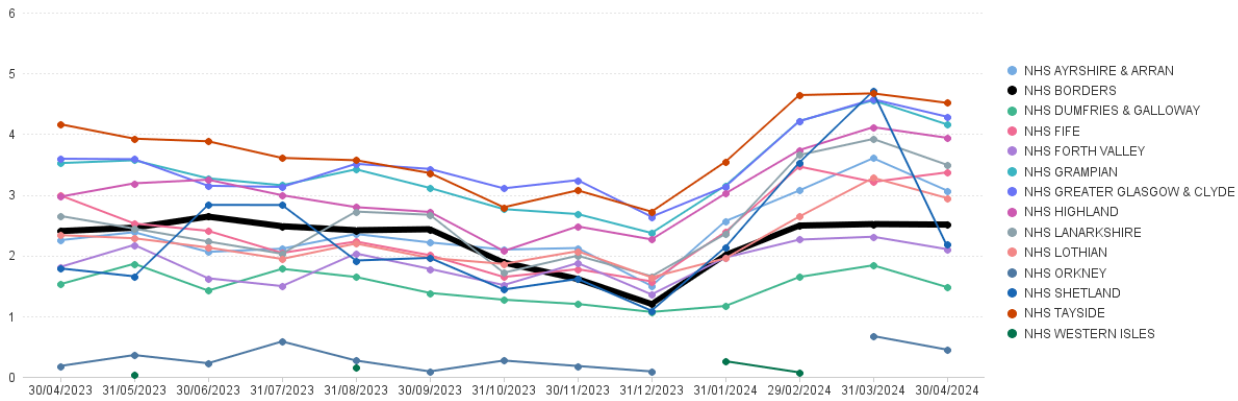
NHS Borders: Number of Paid Line Items in Month (Apr 2024)



Nicotine Replacement Therapy Items per '000 List Size by Board

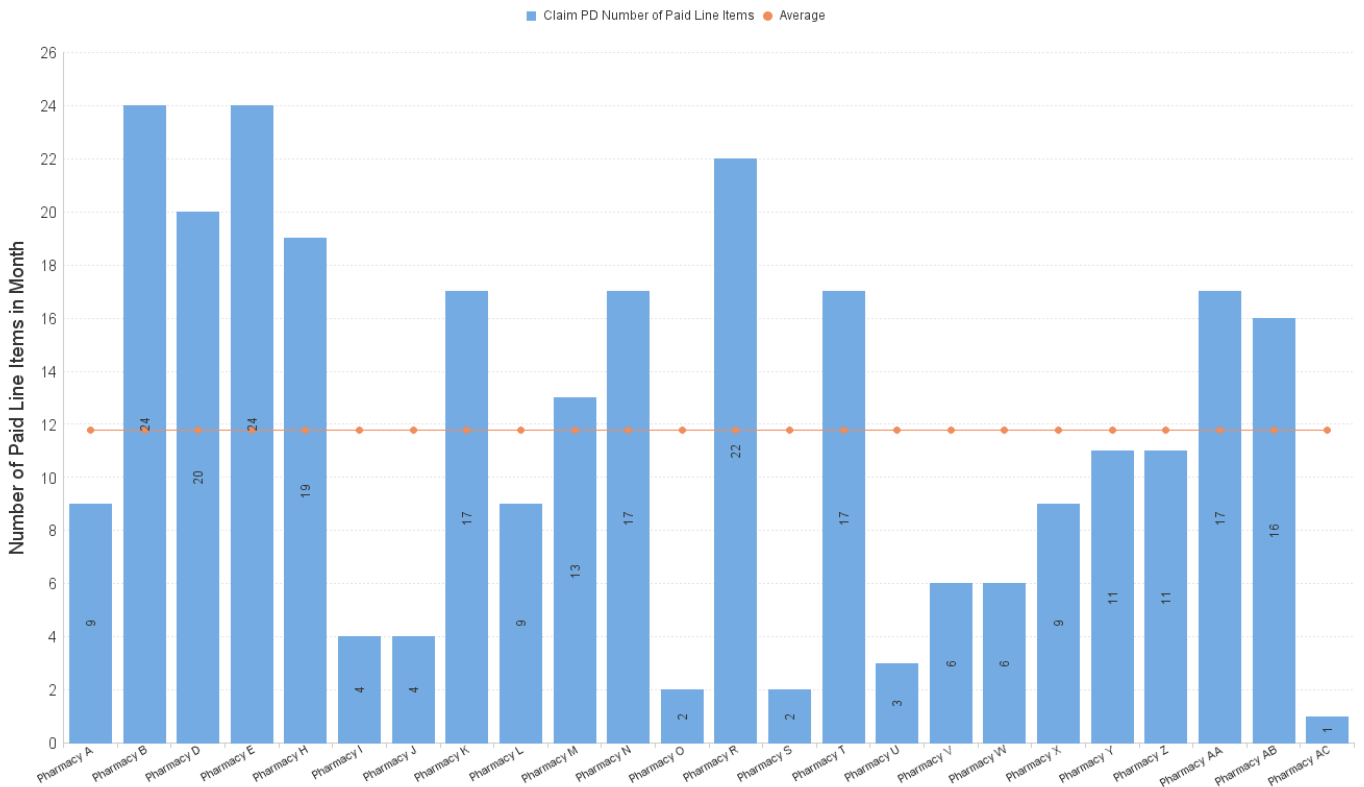
Items dispensed under sub-service flag NRT

Items per '000 LS by Paid Date and Presc Health Board Name



	Apr 23	May 23	Jun 23	Jul 23	Aug 23	Sep 23	Oct 23	Nov 23	Dec 23	Jan 24	Feb 24	Mar 24	Apr 24
NHS AYRSHIRE & ARRAN	2.25	2.38	2.06	2.11	2.35	2.21	2.10	2.12	1.50	2.56	3.07	3.60	3.07
NHS BORDERS	2.40	2.46	2.64	2.48	2.42	2.43	1.88	1.61	1.20	2.01	2.49	2.52	2.51
NHS DUMFRIES & GALLOWAY	1.53	1.86	1.42	1.78	1.65	1.38	1.27	1.20	1.07	1.17	1.65	1.84	1.48
NHS FIFE	2.99	2.53	2.40	2.04	2.23	2.00	1.65	1.77	1.57	2.39	3.46	3.21	3.37
NHS FORTH VALLEY	1.81	2.17	1.62	1.50	2.03	1.78	1.51	1.88	1.36	1.97	2.26	2.31	2.10
NHS GRAMPIAN	3.52	3.57	3.27	3.16	3.42	3.11	2.76	2.68	2.37	3.15	4.21	4.55	4.16
NHS GREATER GLASGOW & CLYDE	3.59	3.59	3.15	3.13	3.51	3.43	3.11	3.24	2.64	3.13	4.21	4.57	4.29
NHS HIGHLAND	2.97	3.19	3.25	2.99	2.80	2.72	2.07	2.48	2.26	3.02	3.74	4.11	3.94
NHS LANARKSHIRE	2.65	2.44	2.23	2.03	2.72	2.67	1.72	2.00	1.66	2.35	3.65	3.92	3.49
NHS LOTHIAN	2.33	2.28	2.13	1.94	2.20	1.96	1.86	2.07	1.64	1.95	2.64	3.28	2.95
NHS ORKNEY	0.18	0.36	0.22	0.58	0.27	0.09	0.27	0.18	0.09			0.67	0.45
NHS SHETLAND	1.79	1.66	2.83	2.83	1.92	1.96	1.44	1.61	1.09	2.14	3.53	4.71	2.18
NHS TAYSIDE	4.16	3.92	3.88	3.61	3.57	3.36	2.79	3.07	2.72	3.54	4.64	4.67	4.51
NHS WESTERN ISLES		0.04			0.15					0.26	0.07		

NHS Borders: Number of Paid Line Items in Month (Apr 2024)



NHS Borders - All UCF claims by Pharmacy, Apr 2024

		Other Service	Other Service	Other Service	Other Service	Other Service	Other Service	Other Service	Other Service	Other Service	Other Service	Other Service	Other Service	Pharmacy First Service	Pharmacy First Service	Pharmacy First Service	Pharmacy First Service	
		BRC	CPUS	EBC	EHC	GFF	HFG	HFR	HLS	MVP	NRT	SHG	SHR	SIG	IPG	M	UTG	UTR
Pharmacy B	30/04/2024		147	3	15	23				1	9			2	7	352	24	
Pharmacy C	30/04/2024	1	89			33					24			3	3	289	7	
Pharmacy D	30/04/2024		77		3	55								3	1	89	9	
Pharmacy E	30/04/2024		236			35	2				20	1		2		216	10	
Pharmacy F	30/04/2024		157	2	4	39					24			1	3	491	12	
Pharmacy I	30/04/2024		129		2	57	1				19	2	1	13	5	292	25	
Pharmacy J	30/04/2024		12			9					4					33	2	
Pharmacy K	30/04/2024	1	99	2	1	12					4	1		3	2	224	4	
Pharmacy L	30/04/2024		71		5	21	1				17				1	223	12	
Pharmacy M	30/04/2024		125	1	2	39					9	2			2	287	1	
Pharmacy N	30/04/2024		53		5	18					13			1		184	4	
Pharmacy O	30/04/2024		83		3	31	1			1	17					178	9	
Pharmacy P	30/04/2024		26		1	12					2					63	1	
Pharmacy R	30/04/2024		103		4	10								2		249	2	
Pharmacy S	30/04/2024		53		1	14					22			1	2	257	8	
Pharmacy T	30/04/2024		34		2	35					2	1		1		283	4	
Pharmacy U	30/04/2024	1	58		2	11					17				2	169	3	1
Pharmacy V	30/04/2024		20		2	26					3			1	5	121	3	
Pharmacy W	30/04/2024		42		2	22					6			1		49	1	
Pharmacy X	30/04/2024		54		2	37				1	6					126	6	
Pharmacy Y	30/04/2024		30		2	14					9					88	1	
Pharmacy Z	30/04/2024		189			19	2				11					72	1	
Pharmacy AA	30/04/2024		37			15					11			1	1	53	3	
Pharmacy AB	30/04/2024		163		1	11				2	17			2		414	4	
Pharmacy AC	30/04/2024		57		9	6	1	1	1	1	16					200	2	
Pharmacy A	30/04/2024		20		2	27					1			1		102	2	